

MINTHIS



Immerse yourself in the *beauty of life*
at Minthis.

CONTENTS

- 7. DESIGN PRINCIPLES
- 19. PROPERTY COLLECTION
- 27. LUXURIOUS INTERIORS
- 33. RESIDENCES
- 67. VILLAS
- 79. SUITES
- 83. EZOUSA SUITES
- 105. PERSONALISED CONCIERGE
- 107. GLOBAL APPEAL
- 111. CONTACT US



DESIGN PRINCIPLES

▪
OPENNESS, LIGHT AND AIR

“The architecture has the power from a humanistic point of view to regenerate you visually and sensorially”.

Nik Karalis, CEO Woods Bagot

Sophisticated living comes from simplicity as homes bond the traditions of local vernacular design with modernist values and elegance. Internationally celebrated architects Woods Bagot have let their philosophy be guided by the mosaic of the surrounding landscape.



The designers travelled extensively through local mountain villages to understand the philosophies of traditional Cypriot architecture. The homes at Minthis merge these time-honoured aesthetic principles with the best of contemporary design, creating refined cultural evolutions that evoke village life.

LIMITLESS PANORAMAS



From snow-capped mountains, coastal horizons and wild hillside to manicured golf greens, quaint villages and star-filled skies, the vistas at Minthis are panoramic and transformative, forever changing with the seasons.





















SUPER NATURE

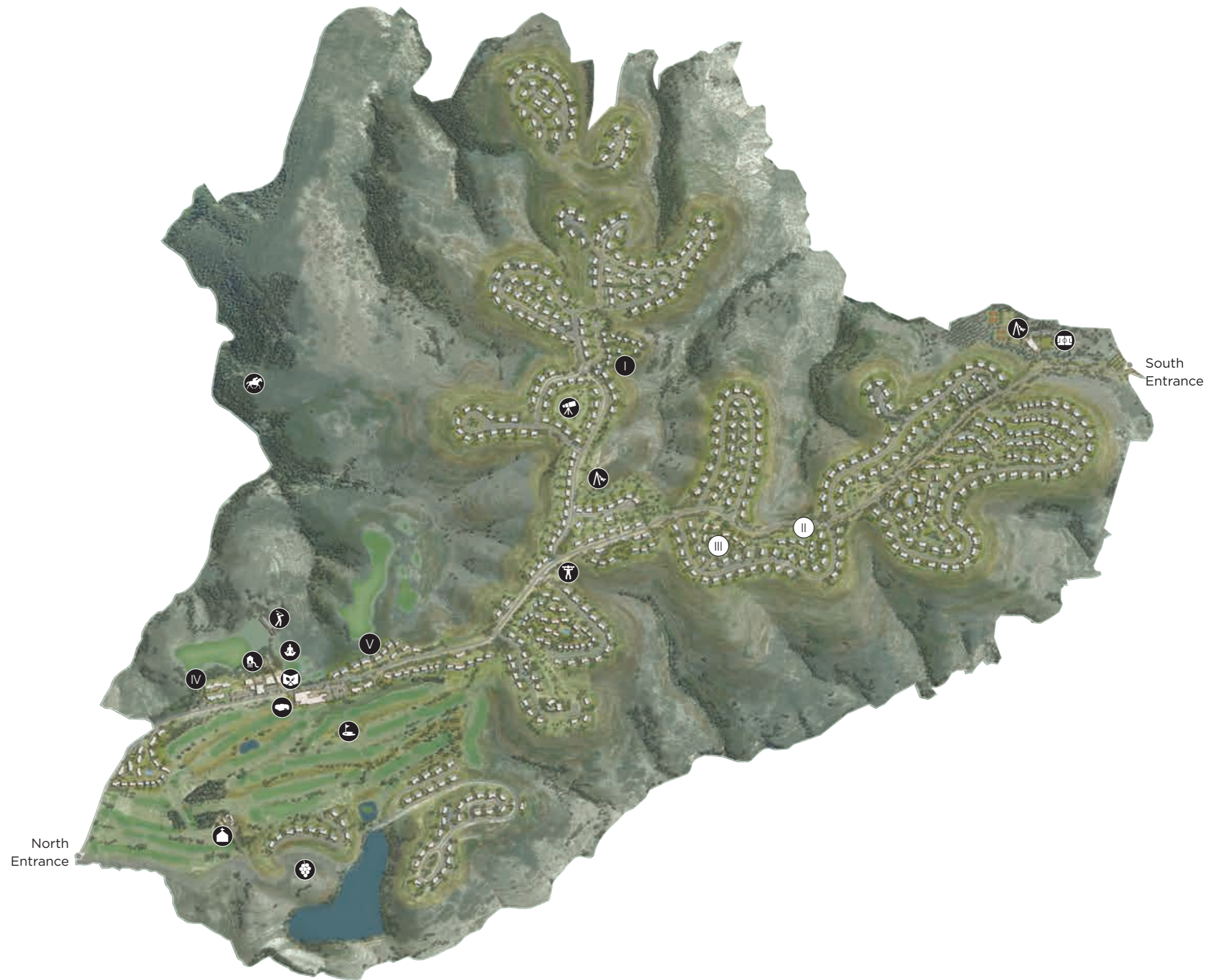
■

A life lived in harmony with nature requires balance; in order for Minthis to add a richness to the landscape, it must give back more than it takes. Situated on a protected Natura 2000 site, only 3% of the five million square metres of the surrounding ecological habitat will be developed. Over 70,000 indigenous trees and shrubs have been planted. Sustainable design harnesses the natural power of the elements.



MASTERPLAN

Clubhouse	
Wellness Spa	
The Plateia	
Golf Course	
Driving Range	
Kids Club	
Outdoor Sports Park	
Sports Ground	
Equestrian Centre	
Monastery	
Vineyards	
Playgrounds	
Stargazing	
The Plateau	
The Ridge	
Ridge Green	
The Suites	
Ezousa Suites	



“Minthis offers a true escape, where you can embrace a new way of living that centres on wellness, tranquility and quality”.

Elias Eliades, Executive President and CEO Pafilia





PROPERTY COLLECTION

▪
FIRST IMPRESSIONS ARE EVERYTHING

One-of-a-kind, contemporary homes embracing luxury living.

At Minthis, pioneering design weaves together natural and architectural drama with an effortless elegance. Charming brick walls of Cypriot limestone and panels of Iroko wood warmly connect with the settings, while walls of glass and striking entryways make a modern impact. The spirit of traditional mountain villages, their simplicity, their community and their oneness with their surroundings, echoes within the modern sophistication of each structure and space.



NATURAL MATERIALS

▪

Ochre-hued limestone from the Troodos Mountains, warm Iroko wood, luxurious Italian marbles; every home at Minthis draws upon natural materials, that have been carved and borne out of the earth, channeling their implicit integrity.



COURTYARD LIVING

A traditional element of Cypriot architecture, courtyards are connecting and cooling features of each home. With the sky as a ceiling, water features and a balance of light and leafy shade, courtyards encourage air flow, are social hubs in the home and offer protection from the heat.



FRAMED VIEWS

Many windows are dual-aspect as well as full-height, dramatically framing vistas that lead the eye across inspiring horizons and beyond. Inside warm neutral tones and fixtures and finishes subtly embellish and enhance life, conveying understated luxury that lets the free-flowing spaces speak for themselves.

LUXURIOUS INTERIORS

■
YOUR HOME, YOUR SANCTUARY

*“There is a unique balance of personal intimacy and openness
in the homes that comes from the light”.*

Demetris Ashiotis, Executive Director Pafilia

Using warm, neutral tones, clean, contemporary fittings and beautiful earth-borne materials, interiors are sophisticated in their simplicity. Walk across marble floors into the open-air courtyard or onto shaded terraces, as everyday life moves seamlessly between inside and outside. Inside each property, Residences, Villas and Suites, spaces are open, and natural light and panoramic views are fundamental architectural elements. This suffusion of daylight enhances well-being and ensures that homes are as regenerative as the landscape.





FIXTURES AND FINISHES

■

A beautiful rhythm of floor-to-ceiling windows lets the outside into spaces that are impeccably finished, using the finest fixtures, clean and timeless in design.



*At Minthis architectural forms are intuitive,
letting nature be the luxury.*





RESIDENCES

MEDITERRANEAN LIVING

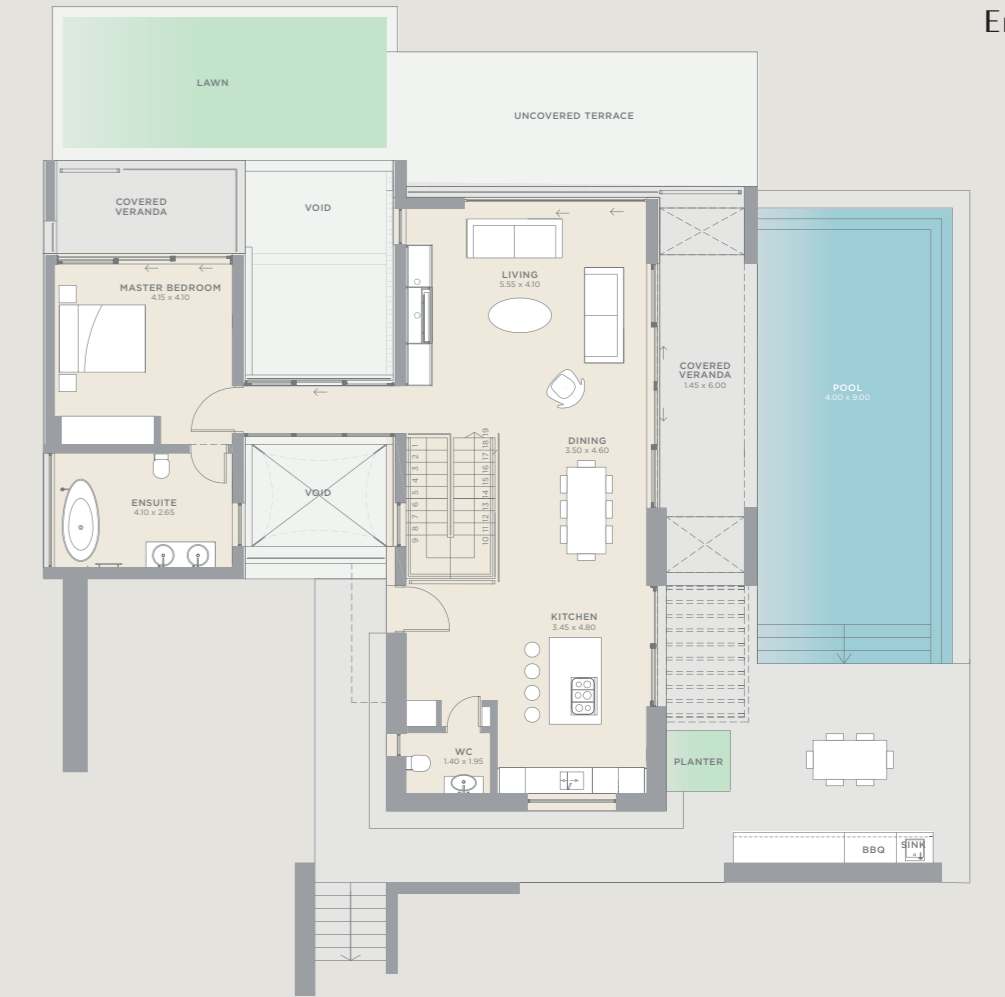
Influenced by the graceful architecture of traditional Cypriot dwellings.

The Residences at Minthis are a collection of unique, customisable homes, designed to be an emotional response to the extraordinary surroundings. Towering windows frame the views that unfurl before you, natural materials are tactile and authentic and terraces and central courtyards invite peaceful reflection. Customise the designs to suit your lifestyle by adding gyms, saunas, guest houses or wine cellars and select from stylish fixtures and finishes to create a truly personal, sophisticated home.

PETRA

Petra is spacious and light. The main level kitchen/living space flows out to the pool and BBQ area and a glass gallery bridge leads to the wonderfully private master suite. Downstairs, guest bedrooms open onto sunny terraces.

4 BEDROOMS
From 308sqm



Entry Level

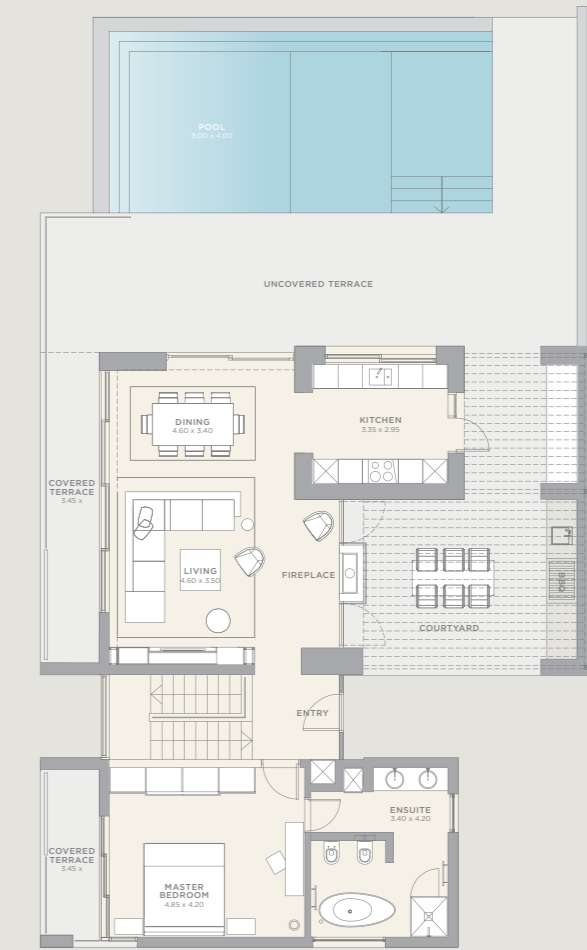


Lower Level

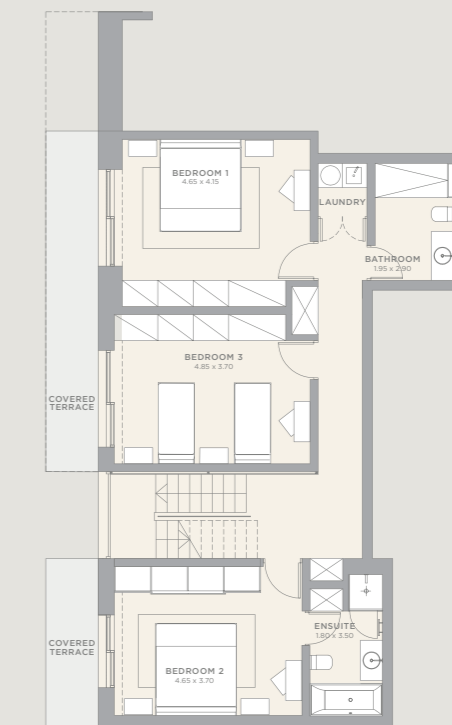
ELECTRA

A villa designed to nestle against the hillside, Electra's master bedroom, infinity pool and dual-aspect living spaces are on the main floor, while guest bedrooms are on the floor below. The kitchen opens onto a large patio and external entertaining area.

4 BEDROOMS
From 270sqm



Entry Level

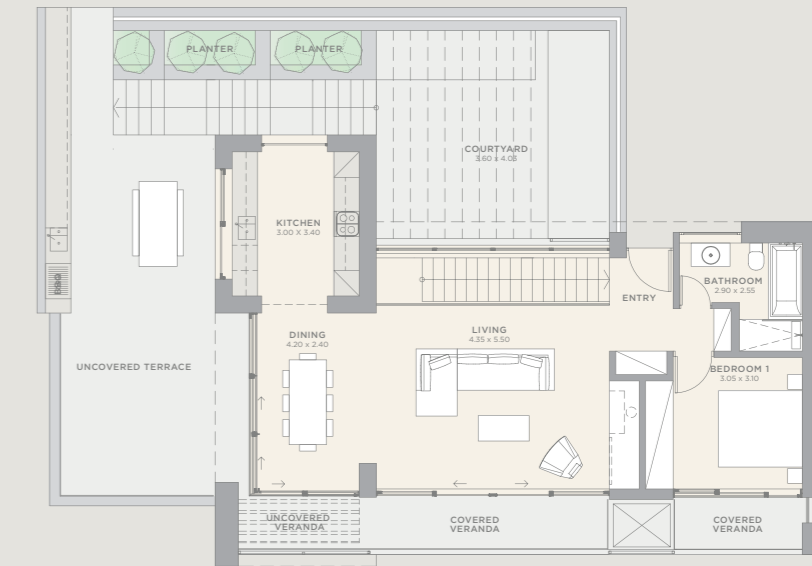


Lower Level

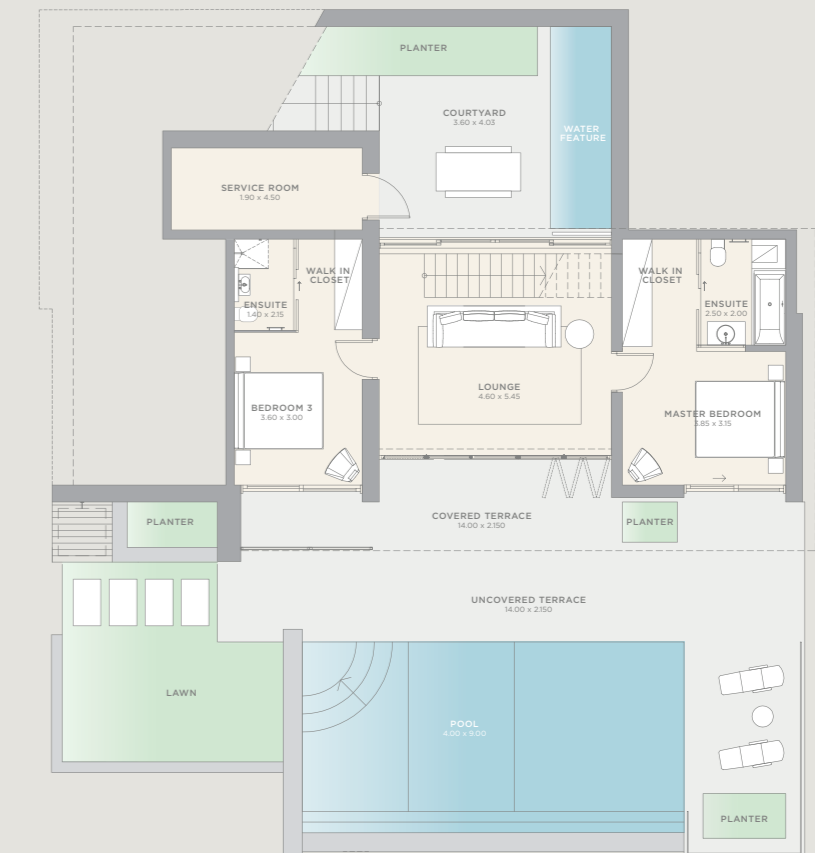
CALLISTO

Callisto is a modern, open-plan ode to light. The large flexible layout leads to a pretty courtyard, while each bedroom occupies its own private space apart.

3 BEDROOMS
From 260sqm



Entry Level



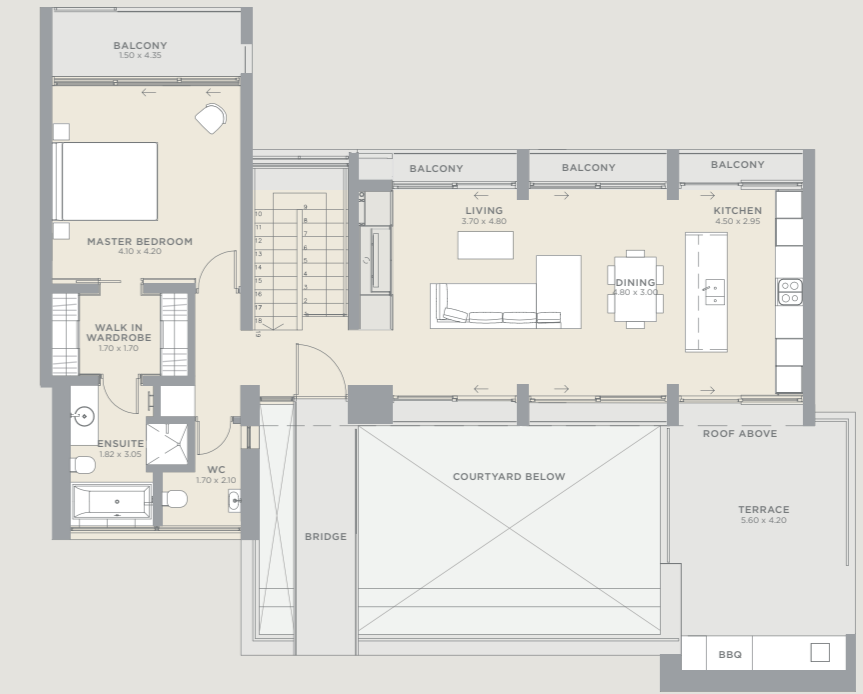
Lower Level

AMALTHIA

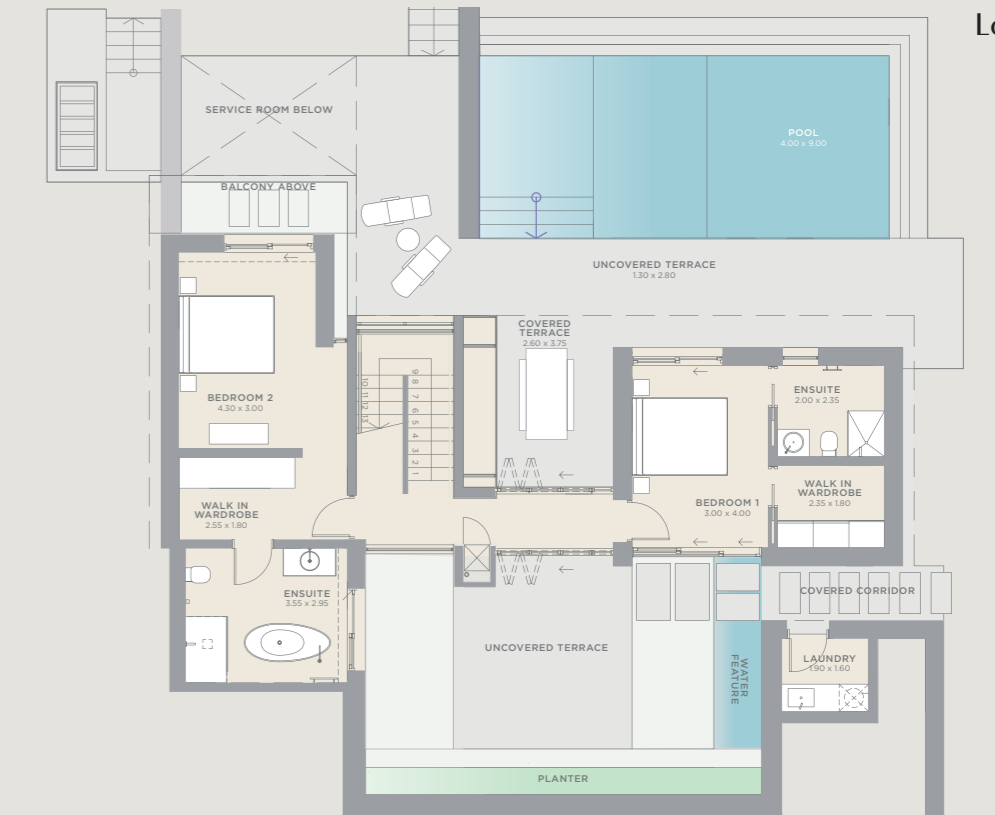
Cross a striking glass bridge to the entrance at Amalthia, a beautifully bright villa with full-height windows throughout. The ground floor master suite features a stylish walkthrough closet, and the alfresco courtyard opens onto the poolside terrace.



3 BEDROOMS
From 243sqm



Entry Level

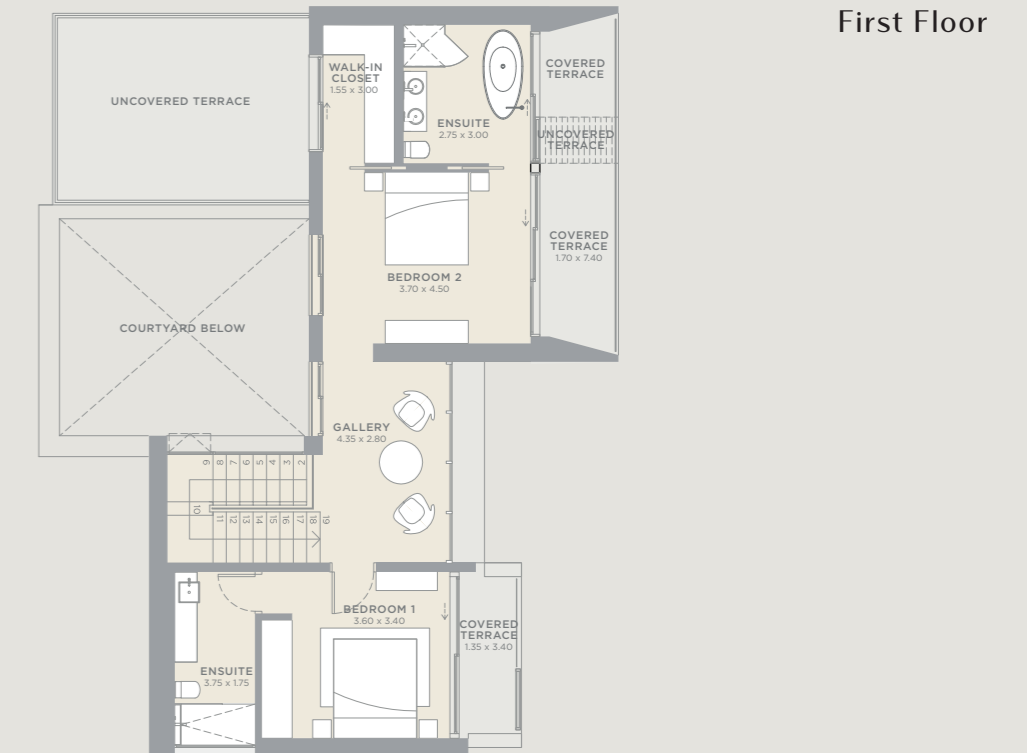


Lower Level

CLEONE

Accessed from the garden, Cleone feels larger due to the striking abundance of floor-to-ceiling glass. The central courtyard off the kitchen is a place of complete seclusion and the master suite boasts a luxurious dressing room.

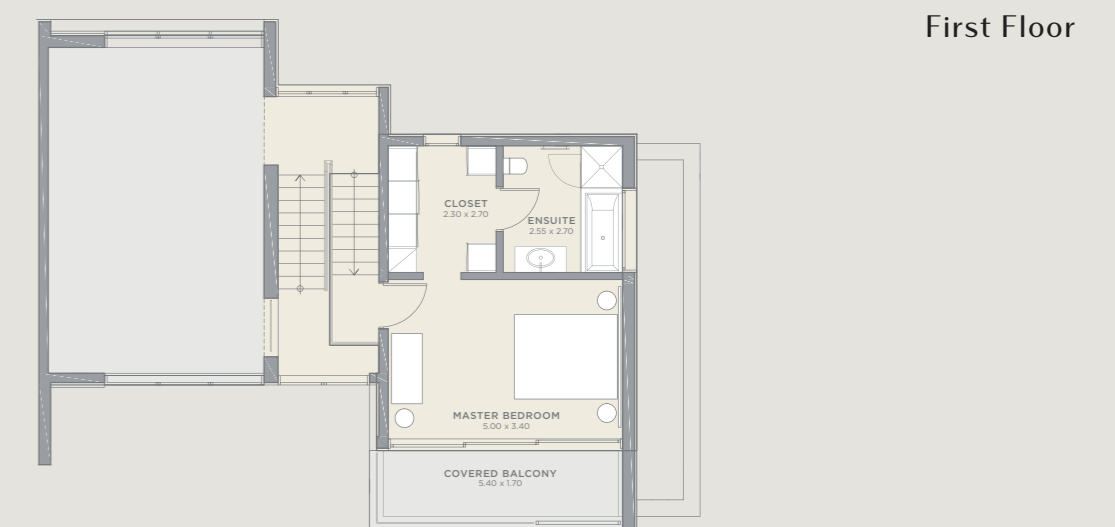
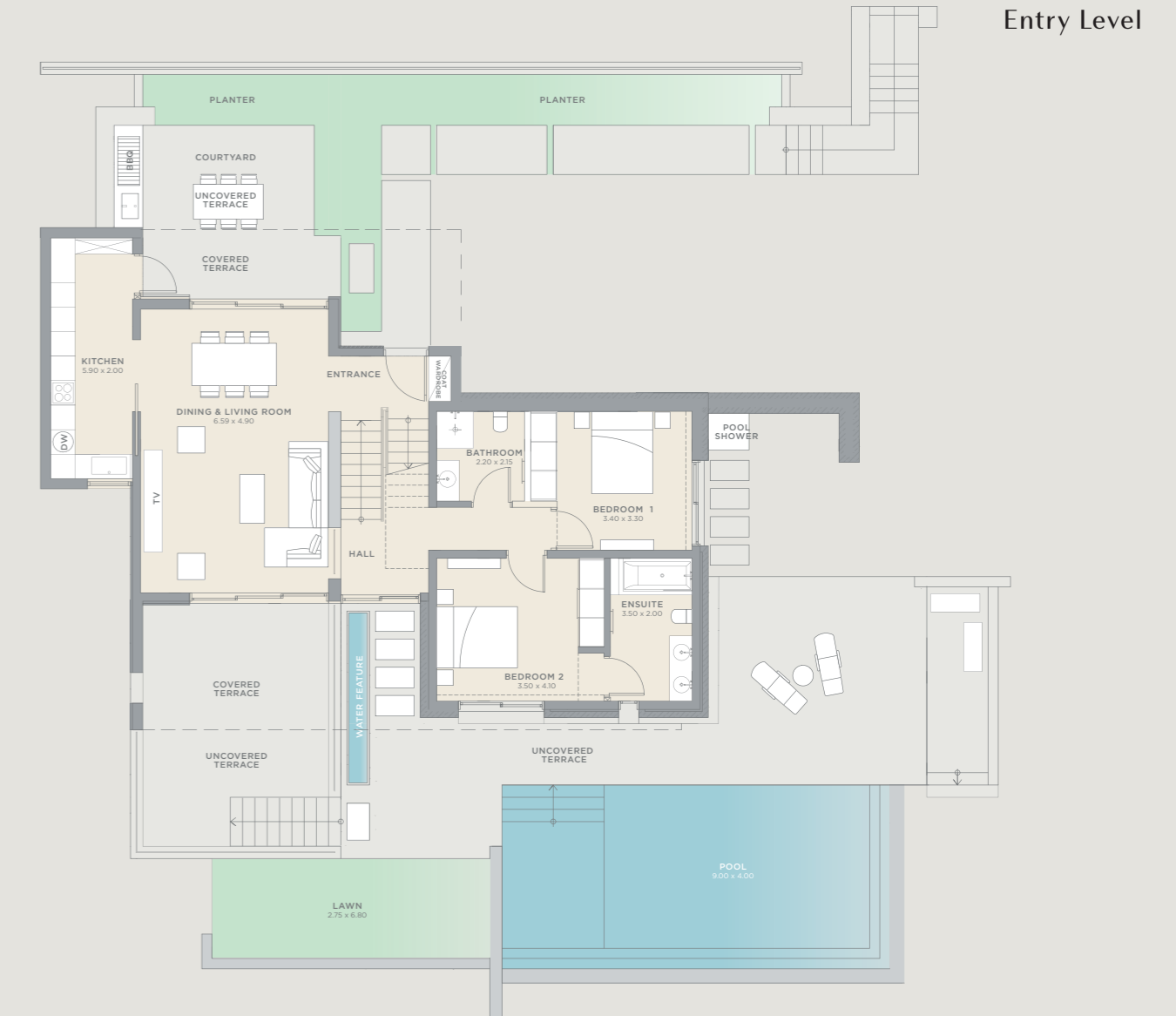
3 BEDROOMS
From 243sqm



ASTERIA

The mezzanine levels create an impressive exterior profile and high-ceilinged distinct spaces. With the master suite on its own separate level, Asteria is perfect for those seeking a balance between openness and intimacy.

3 BEDROOMS
From 240sqm



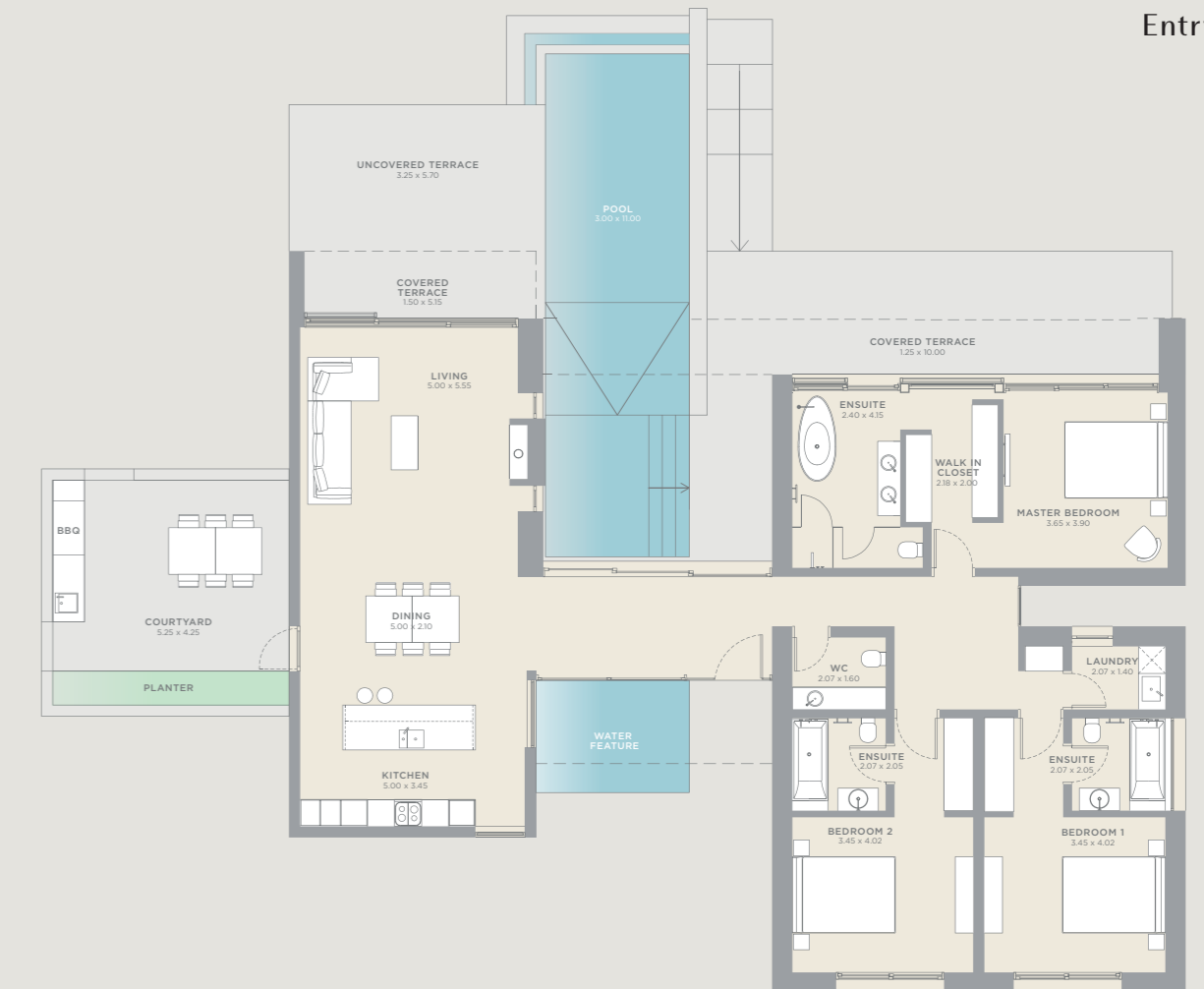
HARMONIA

A dramatic all-glass entrance welcomes you to Harmonia, a home arranged around its striking feature pool. The elegant master suite opens out onto the pool terrace with spectacular views, and a fireplace separates the kitchen and living area.

3 BEDROOMS
From 240sqm



Entry Level



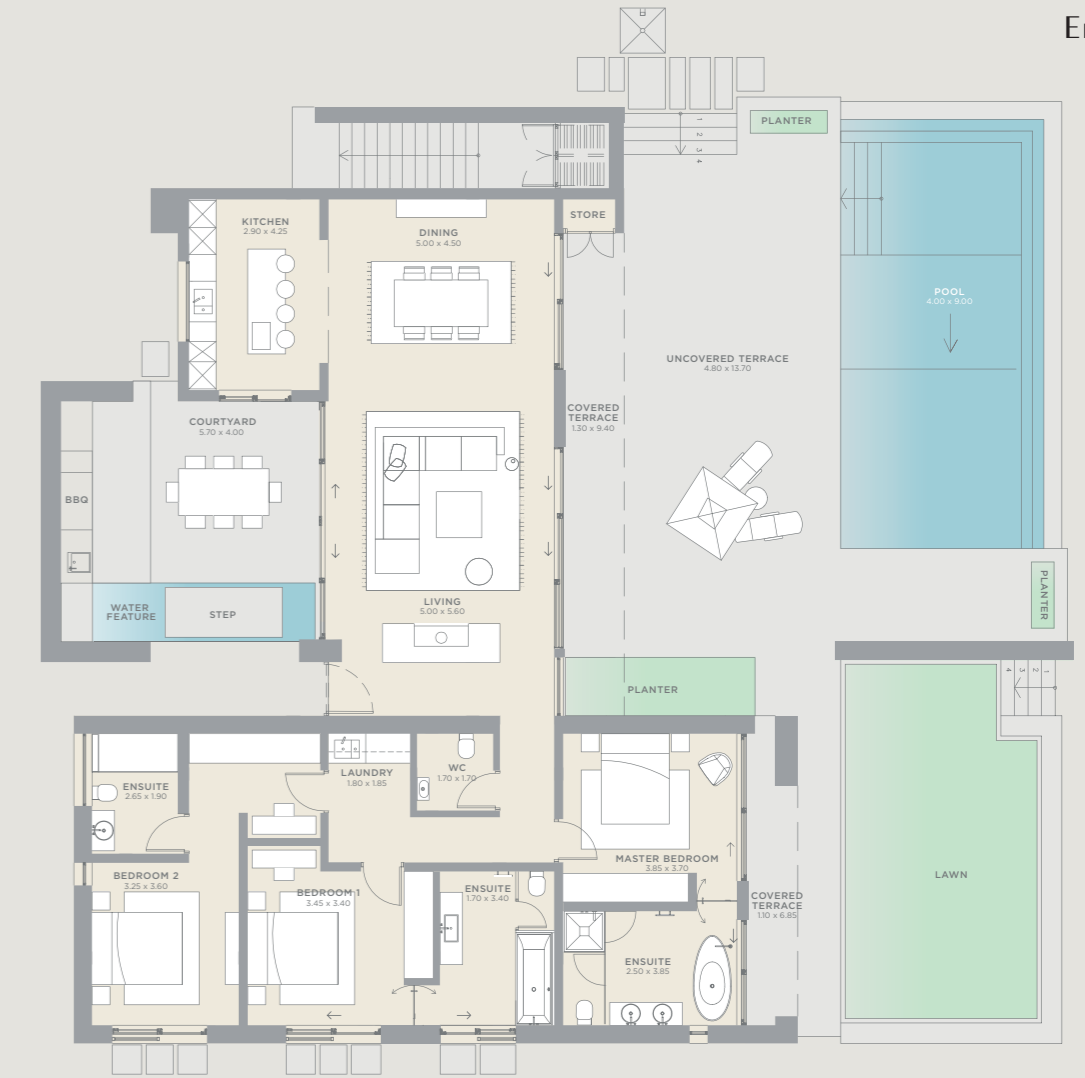
ARTEMIS

Like the goddess it is named after, Artemis is beautifully connected to nature. Its open-plan living and dining area spills seamlessly onto a large outdoor pool terrace on one side and a courtyard on the other.

3 BEDROOMS
From 235sqm



Entry Level





VILLAS



EXCLUSIVE RESIDENTIAL NEIGHBOURHOOD

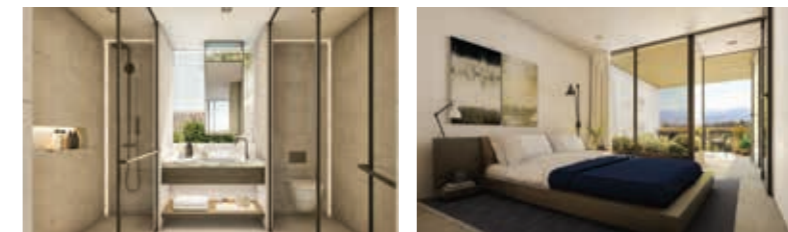
Architects Woods Bagot have designed the lines around nature, the commanding views and a vision of refined Cypriot living.

The Villas at Minthis take full advantage of their incredible surroundings. Along with the incomparable panoramas, the layouts were designed for the modern lifestyle. Open floor plans accommodate both entertaining and family life, with the perfect amount of privacy; living/dining space, peaceful verandas, and an elegant private plunge pool.



THE RIDGE AND RIDGE GREEN

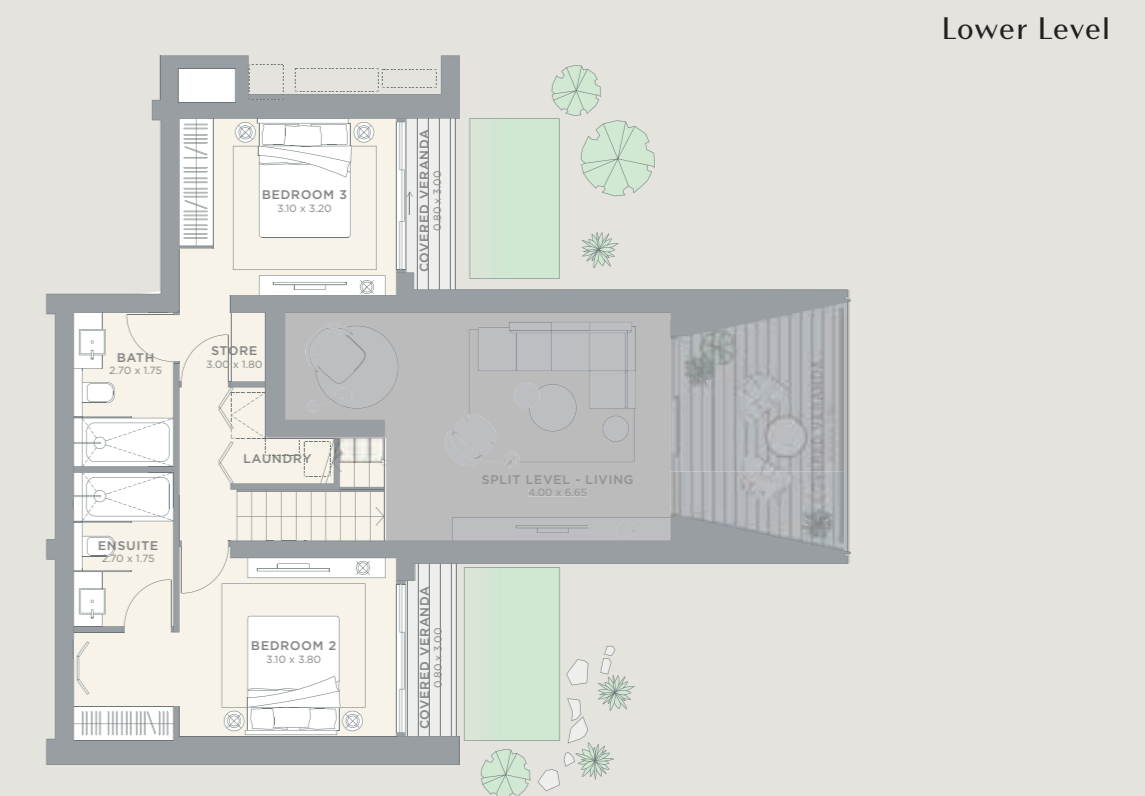
Named after its incomparable location, The Ridge and Ridge Green is made up of two-and three-bedroom Villas spread across two verdantly scenic spots. Situated at the highest point of the resort, all Villa views are something special. To the south, there are rolling fields, dramatic ravines and distant sea views; to the east, city lights and the ever-changing colours of the sea.



HESPERIDES

Accessed via a shaded private courtyard, Hesperides, named after the goddess of sunsets, maximises the scenery. With sky-high glass walls filling the open spaces with sunlight, the sunken dining room's 4.5m-high ceilings serve to enhance light and volume. Indoor/outdoor living is prioritised; the kitchen seamlessly extending onto a large terrace surrounding a private plunge pool, perfect for lounging, entertaining and dining alfresco.

2 OR 3 BEDROOMS
From 136sqm



AURA

With a flowing open-plan layout, floor-to-ceiling windows and thoughtfully appointed courtyards, terraces and gardens - Villa Aura provides the best of boundless living. The striking single pitched roof is typical of Cypriot architecture and the outdoor kitchen, stylish L-shaped seating area and plunge pool are designed for life alfresco.

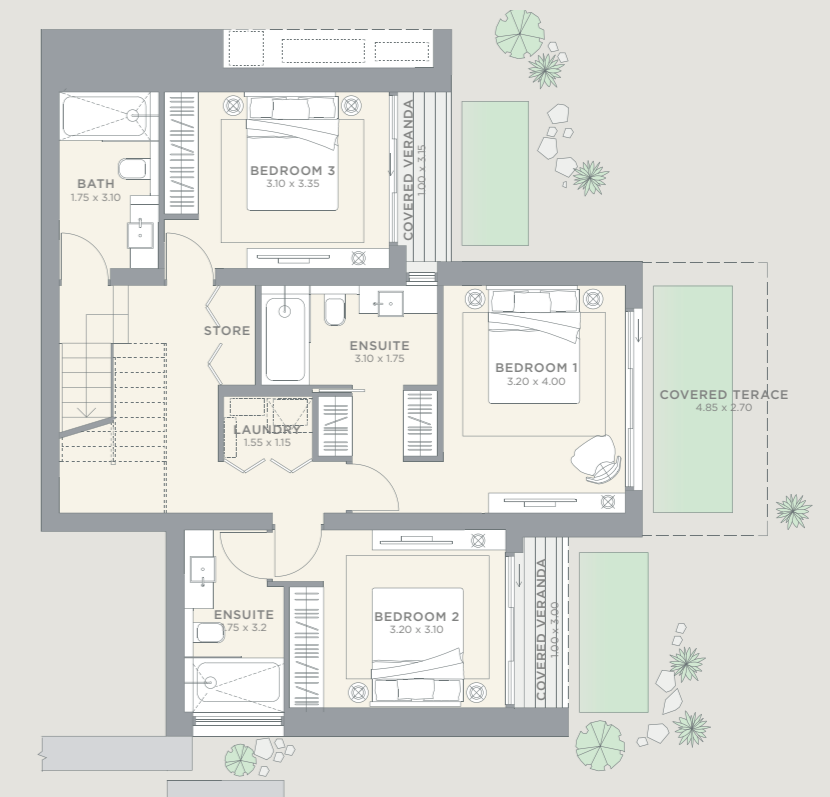
2 OR 3 BEDROOMS
From 163sqm



Entry Level



Lower Level





SUITES



CONTEMPORARY APARTMENTS

Capturing the life and soul of Minthis, The Suites are just steps away from the Plateia, Wellness Spa, Golf Course and Clubhouse.

A collection of two-bedroom ground, first floor and duplex apartments, that are the pinnacle of low maintenance, high luxury living. Ergonomic spaces flow instinctively, with high ceilings and full-height windows on both sides unifying the inside and outside. Embodying the architectural spirit of Minthis, the Suites balance light and shade, blurring the line between indoor and outdoor and framing stunning views.





EZOUSA SUITES

■
UNCOMPROMISED LUXURY

Contemporary design with modern excellence

Nestled into the hillside these two bedroom Suites with communal and children pool combine contemporary design with modern excellence. The secluded and private neighbourhood is perfectly positioned at the heart of Resort life, next to the Wellness Spa and within walking distance to amenities including the clubhouse, golf course, driving range and our village square called The Plateia.



SERENITY SURROUNDED BY NATURE



Orientated to the East and South East there is a distinct air of tranquility in these private homes. The ergonomic inside instinctively flow's onto large verandas that offer the perfect place to watch the sunrise and reflect on the beauty of life.

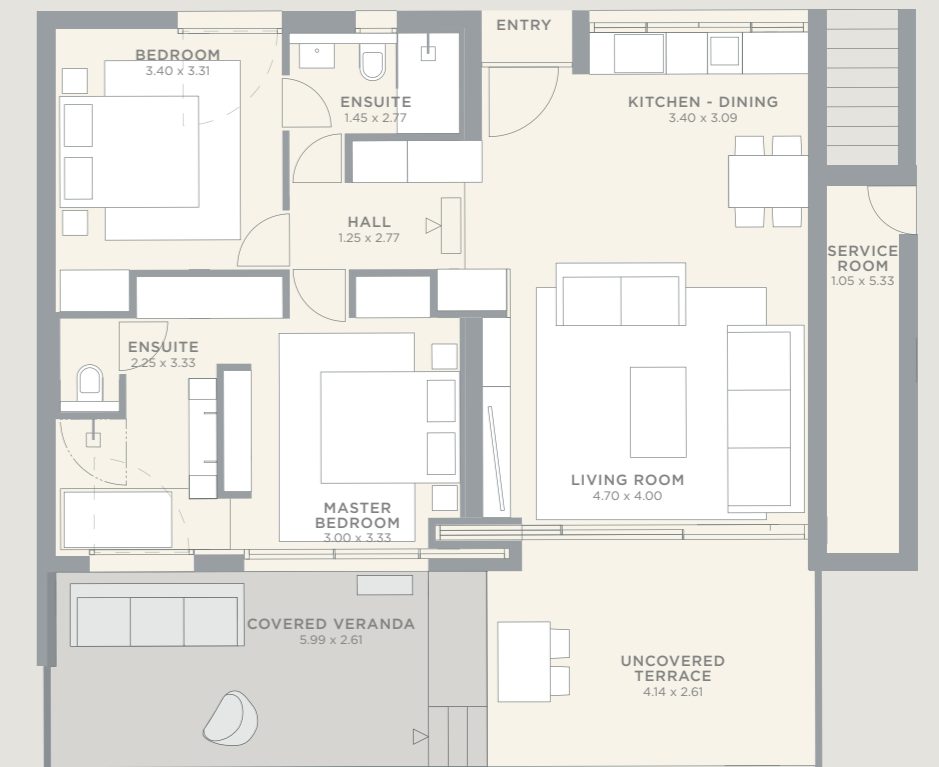


OLYMPUS

The ground floor split level design offers beauty and practicality. The spacious inside areas instinctively flow to the covered and uncovered verandas where each outdoor space has a sense of purpose and privacy.



2 BEDROOM G. FLOOR SPLIT LEVEL
From 109sqm



OLYMPIA

The generous ground floor apartment is an uninterrupted ergonomic space where the indoor fuses with the outdoors and the large full height sliding doors disappear to emphasise the mesmerising views from all rooms.



2 BEDROOM G.FLOOR
From 103sqm

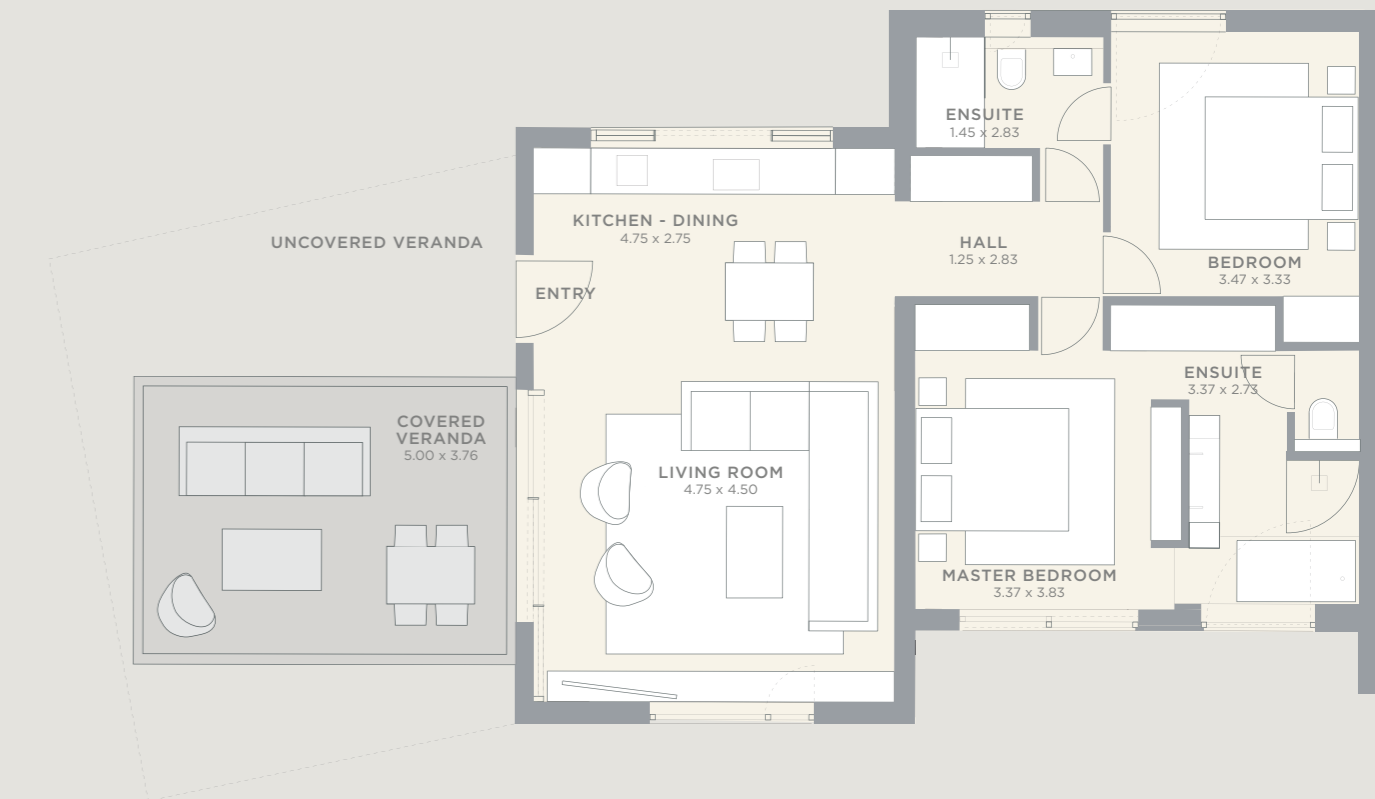


OLEA

The first floor suites are spacious, open plan light-filled and airy. The large courtyard to the side of living area provides a shaded private space perfect for enjoying life al fresco.



2 BEDROOM FIRST FLOOR
From 103sqm

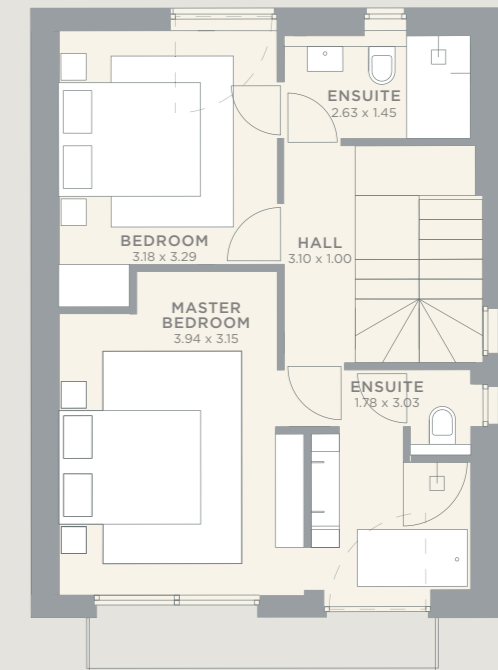
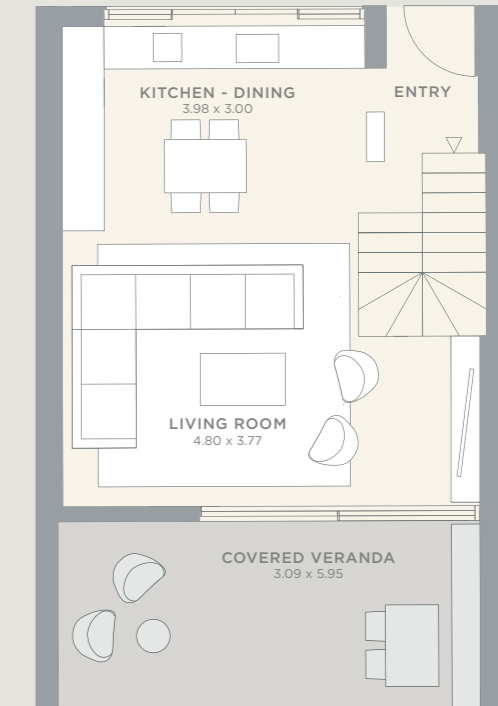


OLEANDER

The new duplex design is a two level apartment that creates both space and privacy for its inhabitants. The lower level has a large covered veranda whilst the upper level is perpetually bathed in a sunny glow thanks to the full-height windows.



2 BEDROOM DUPLEX
From 107sqm



Enjoy beautiful moments at Minthis.





PERSONALISED CONCIERGE

▪

A WORLD OF PRIVILEGE AND SUPPORT

*Life lived to the full should be life led effortlessly,
spending time exactly as you choose.*

Residents at Minthis benefit from an experienced concierge service, on-hand to assist and manage a host of practical and lifestyle requests. From dinner reservations and nannies to yacht charters, events or travel arrangements, our expert concierge team offer professional, discreet assistance, enabling you to focus on enjoying life. Our first-class property management service makes sure that your home and the community it is in, will always be maintained to the highest standards, providing everything from landscaping and pool maintenance to housekeeping and security. And, our dedicated rental division can make maximising the rental potential of your property completely effortless.



GLOBAL APPEAL

▪
A TIMELESS ASSET

*Real Estate at Minthis is an asset that bridges the gap
between pragmatic and personal.*

Property options are diverse and the strategy is low density, guaranteeing exclusivity and long-term property and rental values. The resort is established enough to be a secure investment but new enough to ensure appreciation. Minthis offers a unique opportunity: a chance to become part of an ever-evolving high-end community that is pioneering in its holistic approach to living. This makes it a multifold investment; its stunning location, its attention to detail and thoughtful approach to sophisticated, restorative living makes it a savvy lifestyle investment with significant potential for long-term appreciation.

*“Dwell on the beauty of life. Watch the stars,
and see yourself running with them”.*

Marcus Aurelius



AWARD WINNING RESORT



RECOGNISED AS A WORLD-CLASS LIFESTYLE DESTINATION

2019 – Cyprus Tourism Awards
Silver Award for Corporate Identity / Reputation Management / Branding

2018 – 2019 - International Property Awards
Best Leisure Development Europe

2018 – 2019 - European Property Awards
Best Leisure Development Cyprus

2017 – 2018 - European Property Awards
Winner of Best Leisure Development Cyprus, 5 star

2017 – 2018 - European Property Awards
Winner of Best Property Single Unit Petra Villa, 5 star

2015 - 2016 – European Property Awards
Highly Commended Award for Best Leisure Development Cyprus

2013 – European Property Awards
Highly Commended Award for Architecture Callisto Villa

2009 – European Residential Property Awards
Winner of Best Golf Development Cyprus, 5 star

2009 – European Residential Property Awards
Winner of Best Architecture Cyprus, 5 star

2009 – European Residential Property Awards
Winner of The Architecture Award

2008 – Homes Overseas Magazine Winner of the Off-Plan Top 20

2008 – World Residence Awards Winner of the Grand Prize

Pafilia

HEAD OFFICE- CYPRUS

Pafilia Property Developers Ltd
Pafilia House
33 Nicodemou Mylona Street
Marina Court
PO Box 60159
8101 Pafos – Cyprus
Tel: +357 26 848 800
Email: info@minthisresort.com

MINTHIS - CYPRUS

Property Sales Suite
Minthis Resort
Tsada
P.O. Box 62085
8060 Paphos
Cyprus
Tel: +357 26 842 244
Email: sales@minthisresort.com

CHINA - BEIJING

Pafilia Property Developers Ltd
3305, No.6 Building,
Jianwai SOHO, No.39 East
3rd Ring Middle Road,
Chaoyang District, Beijing, China
Tel: (+86) 136 6102 2984
Email: info@minthisresort.cn.com

CHINA - SHENZHEN

Pafilia Property Developers Ltd
Room 8546, 85/F
Ping An Finance Centre, No. 5033
Yitian Rd, Futian District
Shenzhen, China
Tel: (+86) 138 0252 9290
Email: southchina@minthisresort.cn.com

CHINA - SHANGHAI

Pafilia Property Developers Ltd
Room B15, 22F, Jing'an Kerry
Center Office Tower 3,
No 1228 Middle Yan'an Road,
Jing'an District, Shanghai, China
Tel: (+86) 183 1071 0629
Email: info@minthisresort.cn.com

HO CHI MINH

Pafilia Property Developers Ltd
Level 46, Bitexco Financial Tower
2 Hai Trieu Street
District 1, Ho Chi Minh
Vietnam, South East Asia
Tel: (+84) 28 6287 5911
Email: seasia@minthisresort.com

RUSSIA - MOSCOW

Pafilia Property Developers Ltd
6 Presnenskaya
Naberezhnaya, bldg. 2
Empire Tower, Floor 31
Office 3, 123112 Moscow, Russia
Tel: +7 (495) 137 8998
Email: info@minthisresort.ru

ATHENS

58, Kafkasou &
52, Skopelou str. Corner
Kypseli, Athens,
Greece
T. +30 210 271 7100
E. info@pafilia.gr

The contents and information contained in this brochure are intended for general marketing purposes only and must not be construed as advice, or being complete and accurate nor be relied upon as such. Neither the company nor any of its directors or employees give any representation or warranty as to the reliability of the information contained herein, and shall not be responsible and disclaim all loss, liability or expense of any nature whatsoever which may be attributable (directly, indirectly or consequentially) to the use of the information provided.

